

28. Which sense organ is the child using here?

- A. Nose
- B. Tongue
- C. Skin
- D. Ears



29. During a Full Moon _____.

- A. The entire Moon gives out its own light to the Earth
- B. Half of the Moon is lit by the Sun
- C. The entire lit side of the Moon is visible from the Earth
- D. The Moon appears to be completely dark

30. Which of the following does NOT show a living thing responding to its environment?

- A. A rat running away when being chased.
- B. A door closing when it is blown by the wind.
- C. A tortoise going back into its shell when it is touched.
- D. None of these

ACHIEVERS SECTION

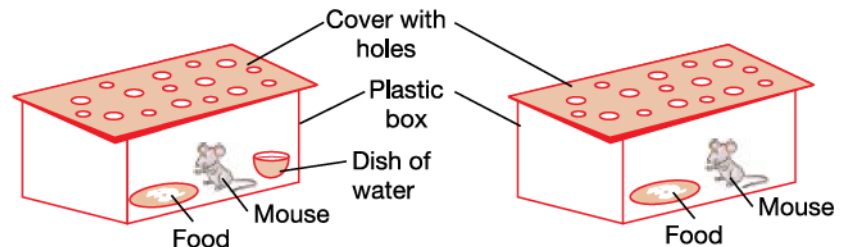
31. Solve the given crossword to find the number of homes:

- (a) Built by animals themselves
- (b) Built by man for domestic animals

- A. a-3, b-1
- B. a-2, b-2
- C. a-3, b-2
- D. a-1, b-3

S	K	H	N
H	I	V	E
E	I	P	S
D	T	Y	T
R	M	W	A
N	W	E	B
Z	S	A	L
C	E	R	E

32. Arjun conducted the given experiment with two mice. Based on the experiment, Arjun wanted to find out if the mouse needs _____ to survive.



- A. Air
- B. Food
- C. Water
- D. Plastic box

SPACE FOR ROUGH WORK